

Anti-NPY5R Rabbit Monoclonal Antibody
Catalog # ABO16183**Specification**

Anti-NPY5R Rabbit Monoclonal Antibody - Product Information

Application	WB, IF, ICC, FC
Primary Accession	Q15761
Host	Rabbit
Isotype	IgG
Reactivity	Human
Clonality	Monoclonal
Format	Liquid

Description

Anti-NPY5R Rabbit Monoclonal Antibody . Tested in WB, ICC/IF, Flow Cytometry applications. This antibody reacts with Human.

Anti-NPY5R Rabbit Monoclonal Antibody - Additional Information

Gene ID 4889

Other Names

Neuropeptide Y receptor type 5, NPY5-R, NPY-Y5 receptor, NPY5-R, Y5 receptor, NPY5R, NPYR5

Calculated MW

51 kDa KDa

Application Details

WB 1:500-1:2000
ICC/IF 1:50-1:200
FC 1:50

Contents

Rabbit IgG in phosphate buffered saline, pH 7.4, 150mM NaCl, 0.02% sodium azide and 50% glycerol, 0.4-0.5mg/ml BSA.

Immunogen

A synthesized peptide derived from human NPY5R

Purification

Affinity-chromatography

Storage

Store at -20°C for one year. For short term storage and frequent use, store at 4°C for up to one month. Avoid repeated freeze-thaw cycles.

Anti-NPY5R Rabbit Monoclonal Antibody - Protein Information

Name NPY5R

Synonyms NPYR5**Function**

Receptor for neuropeptide Y and peptide YY. The activity of this receptor is mediated by G proteins that inhibit adenylate cyclase activity. Seems to be associated with food intake. Could be involved in feeding disorders.

Cellular Location

Cell membrane; Multi-pass membrane protein.

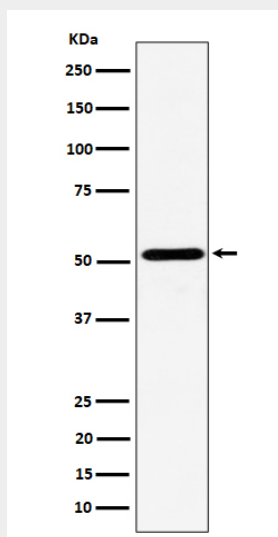
Tissue Location

Brain; hypothalamus.

Anti-NPY5R Rabbit Monoclonal Antibody - Protocols

Provided below are standard protocols that you may find useful for product applications.

- [Western Blot](#)
- [Blocking Peptides](#)
- [Dot Blot](#)
- [Immunohistochemistry](#)
- [Immunofluorescence](#)
- [Immunoprecipitation](#)
- [Flow Cytometry](#)
- [Cell Culture](#)

Anti-NPY5R Rabbit Monoclonal Antibody - Images

Western blot analysis of NPY5R expression in Ramos cell lysate.